

In This Issue: Action Required: PJ & Ice Skating Day | NDFCU Elevate Fundraiser | UE Museum Day | Admissions Season & Siblings | Cold Weather Gear | Help Decorate FPC | Advent Lessons & Carols at Morning Prayer | In the Community



Welcome to Tuesday Newsday!

Volume 17, 2025–2026 | Edition: December 2–8



- 12/12:** Upper El Museum Day
 - 12/16:** Advent Lessons & Carols at Morning Prayer
 - 12/18:** Primary Only 11:30 Dismissal
 - 12/18:** PJ & Ice Skating Day
 - 12/19–1/2/2026:** No School – Christmas Break
-

HAPPY Birthday

Tuesday, December 2 — Tacy Johnson (Elm)

Wednesday, December 3 — Dominic Kopko (Dogwood)

Wednesday, December 3 — Mr. Andrew Garvey (Elm)

Sunday, December 7 — Eme Zoller (Silver Maple)

Sunday, December 7 — Mrs. Heather Tuttle



Action Required: Ice Skating Form



❄️ December 18 is Pajama and Ice Skating Day! ❄️

On the last day before Christmas break, it's GSMS tradition for students to wear their pajamas to school and spend the morning participating in fun activities with their classmates. In the afternoon, younger and older students follow **different schedules**.

Primary Early Dismissal

All Primary children (in Blue Beech and Redbud) must be picked up at **11:30 a.m.** that day. There is no aftercare option. See below for information about skating for Primary children.

Ice Skating at Howard Park — ACTION REQUIRED

All Lower EI, Upper EI, and Junior High students will spend the afternoon ice skating at Howard Park.

✨ There are TWO action items for every skater. ✨

1) Ice Skating Info Form — Due December 10

- All families with LE, UE, or JH students must fill out the [GSMS Pajama Day Ice Skating form](#) to participate in ice skating. Please submit the form no later than Wednesday, December 10.

GSMS Ice Skating Form

2) Ice Skating Waiver

- All skaters need a **signed Howard Park waiver** to skate.
- A copy of the waiver will be sent home with all children in LE, UE, and JH on Friday, December 5.
- You can also download the waiver [PDF] by clicking on the purple button below.
- Signed waivers can be returned in your child's folder or dropped off at the front desk.

Howard Park Waiver

Primary Families Option to Skate

Primary families have the option of joining us at Howard Park after their half-day pickup. Any families interested in doing that must fill out this separate form. Primary children must be accompanied by their own adult at all times.

- [Primary Family Ice Skating](#)

Bank at NDFCU? Raise Funds for GSMS!

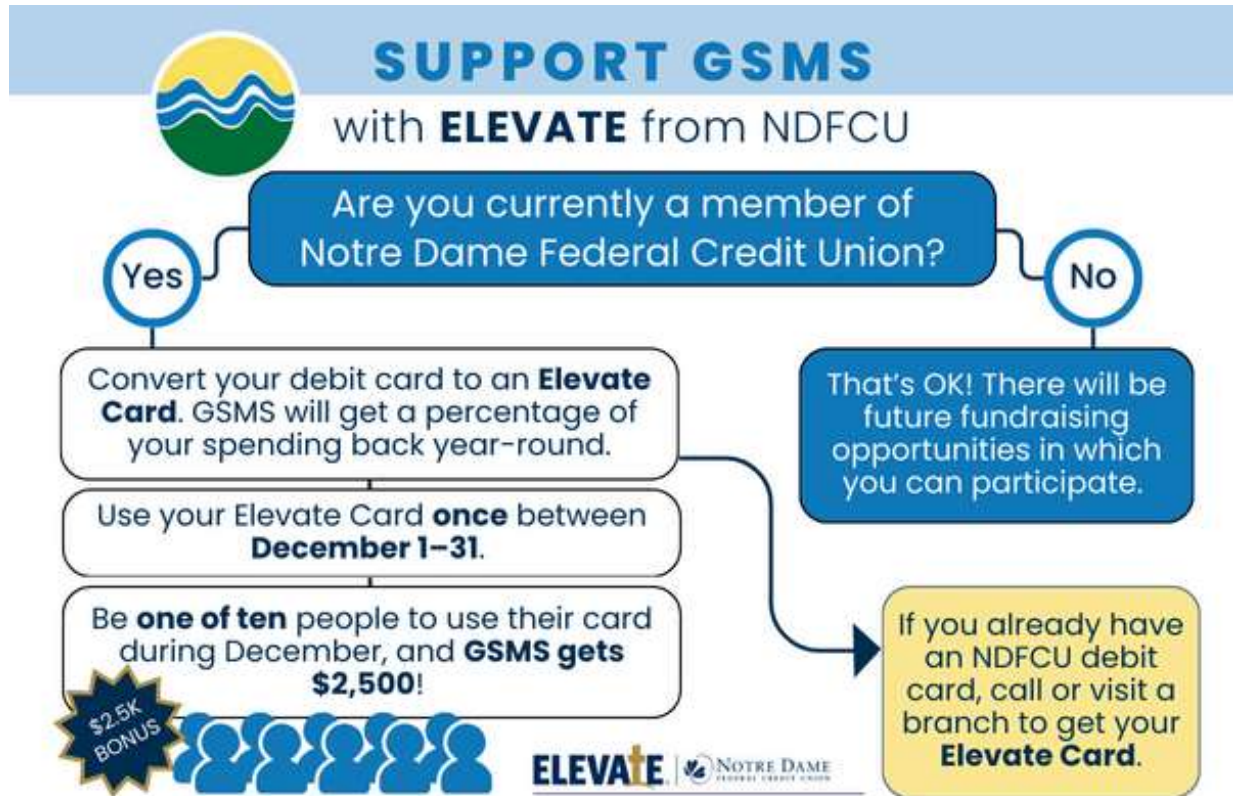
Good Shepherd has a chance to earn **\$2,500** through a great program at Notre Dame Federal Credit Union called "ELEVATE."

December Challenge

If **ten people** make a single purchase (non-PIN) on their **ELEVATE debit or credit cards** during the month of December, Good Shepherd earns a \$2,500 bonus!

1% to GSMS Year-Round

The rest of the year, users earn 1% back on all their purchases, which goes to Good Shepherd.



Get Your ELEVATE Card

If you already use Notre Dame Federal Credit Union, it is pretty simple to **convert your debit card to an ELEVATE card** and help Good Shepherd earn \$2,500.

1. Call the downtown branch at 574-400-4820. Ask for Hannah Ellito or Jasmin Coria. One of them will be happy to assist you.
2. Call the Shamrock Call Center: 800-522-6611
3. Visit any branch to request an ELEVATE card in person.
4. You can apply for a card online, but if you already have an NDFCU debit card, it's **best** to call or visit a branch to make sure everything is handled correctly.

Qualifying Transactions

Once you have your ELEVATE debit card, **use it like a credit card—without the PIN—** ✨ once ✨ between December 1 and 31. Making a purchase online is the easiest way to do this! Joint accounts with two ELEVATE debit cards count as “one swipe,” so either account owner can make the qualifying purchase.

Get Yours ASAP

If you want to support GSMS through the ELEVATE program, please act soon: **This week or early next week.** It can take 10 to 14 business days for new users to receive their ELEVATE cards, and NDFCU is closed this Thursday and Friday for the Thanksgiving holiday.

If you aren't currently a member at NDFCU, that's OK. There will be other opportunities to fundraise for GSMS.

If you'd like to learn more about ELEVATE, visit [this webpage](#) or scan the QR code below.

Thank you for all the ways you support Good Shepherd!



Upper El Museum Day

Friday, December 12
9:00 to 11:00 a.m.

At Museum Day, each Upper Elementary student will display samples of the work they have completed so far this year and will share about their favorite follow-ups. It is a **can't-miss experience for Upper El parents** and a wonderful opportunity for parents from **all levels** to see the scope of work that happens in Upper Elementary. **Drop in anytime between 9:00 and 11:00 a.m.**

Admissions for Siblings & New Families

Admissions season is here! We have begun the process of introducing new families to the benefits of a Good Shepherd education. Do you have a friend or colleague who might want to enroll their children at GSMS? Send them to our website where they can sign up to attend one of our upcoming information sessions. We are particularly interested in meeting new families who will have 3-year-olds for enrollment next fall.

Future GSMS Rams 🐑

If you are a current GSMS family but will have a new sibling to enroll for the 2026–2027 school year, please email us at admissions@gsms.org so we can make sure we have you on our list!

Cold Weather Reminder ❄️

GSMS students enjoy outdoor time during the school day as often as possible! As long as the weather is above **“Real Feel” 0 degrees Fahrenheit**, students generally have outdoor recess. Please make sure your child is prepared with proper outdoor clothing, such as snow pants, hats, waterproof gloves, and snow boots.



FPC Opportunity: Help Decorate GSMS

We welcome anyone who can lend a hand to spend some time at school pulling out and setting up 🎀 decorations for Advent and Christmas. 🎀

💪 Note: This is a fairly physical job that has the potential to get a little messy due to the dust that settles on the decorations when not in use. That is, you don't want to pop by on your lunch hour in your nice work clothing and expect to return just as tidy!

We could use help on any of the following days:

🎁 **Wednesday, December 3, all day**

🎁 **Thursday, December 4, all day**

🎁 **Friday, December 5, all day**

Please email Katie Rutledge at krutledge@gsms.org if you can help, and she will make sure we are ready to put you to work. Thank you in advance for your gift of time! 🙏

Advent Lessons & Carols at Morning Prayer

On **December 16**, we will celebrate Advent Lessons and Carols at our regular Tuesday Morning Prayer service. Beginning at **8:30 a.m.**, this will be a wonderful time of **prayer, reflection, and song** for the GSMS community.

Children from different levels will share songs they have practiced during this special service. As is always the case with our Tuesday Morning Prayer services, we invite family members of GSMS students to join us and experience the time of prayer along with the school community.

Hot Lunch

Next Week's Menu

Monday 12/8 — Pizza Pie

Tuesday 12/9 — Chili

Wednesday 12/10 — Taco Belle Michele

Thursday 12/11 — Salad Sandwich Day

Friday 12/12 — Mutter Paneer

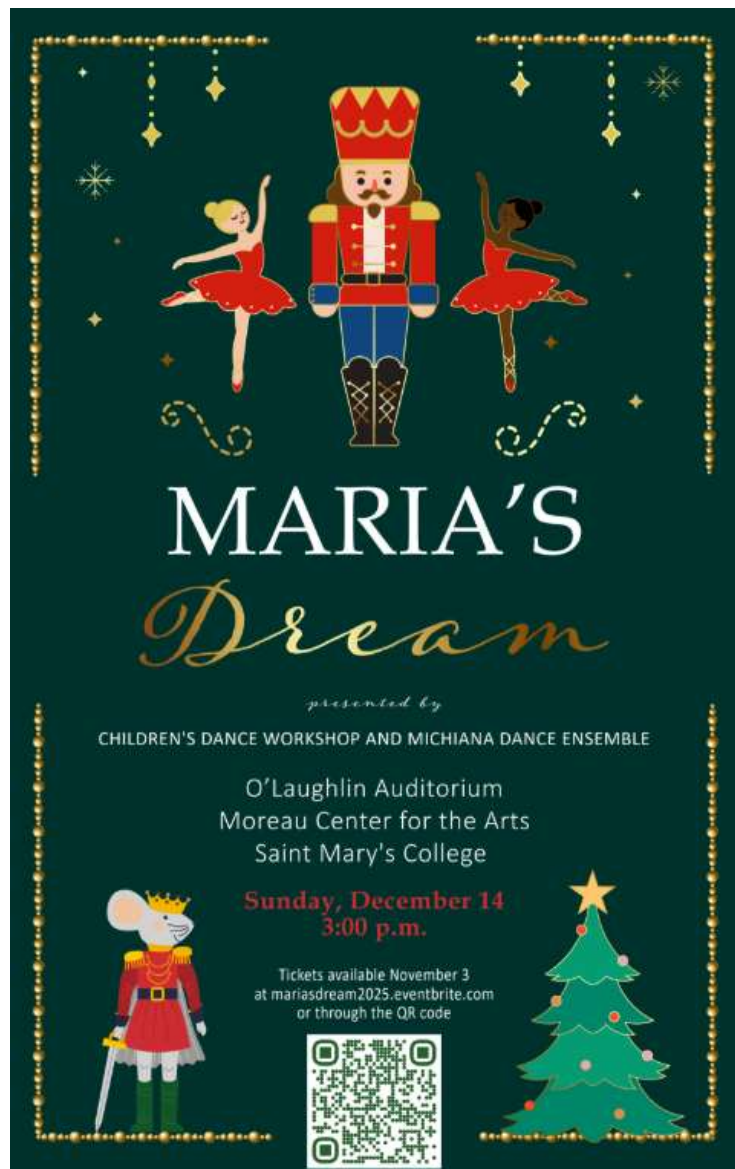


Order Today!

IN THE COMMUNITY

Performance: *Maria's Dream*

The Children's Dance Workshop and the Michiana Dance Ensemble present *Maria's Dream* on Sunday, December 14, at 3:00 p.m. at the O'Laughlin Auditorium at Saint Mary's College. Founder Bonnie Boilini Baxter was the recipient of Good Shepherd's Chiaravalle Award in 2020, honoring those who bring the light of learning and compassion to the area's children. Many GSMS students will be on stage! Tickets are available [online here](#) or by following the QR code below.



Alternative Gift Fair

Prince of Peace Church of the Brethren ([map link](#)) invites the broader community to their annual Alternative Gift Fair on Saturday, December 6, from 9:00 a.m. to 2:00 p.m. This event provides the opportunity for holiday shopping that helps those in need, locally and around the world! Vendors include Unity Gardens Inc., St. Margaret's House, One Village Fair Trade with Friends of Ten Thousand Villages Mishawaka, and many more. Everyone is welcome!

Join us for the annual Prince of Peace Church of the Brethren

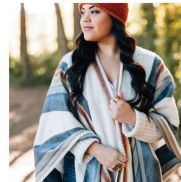
Alternative Gift Fair



Turn your
holiday shopping
into gifts
that help
those in need,
in our local
community a
round the world!

Saturday, December 6th, 9 am - 2 pm

Books, toys, handmade jewelry, handbags,
scarves, tie-dyed apparel, ceramics,
baked goods, soup mixes, and more



Participants include:

One Village Fair Trade
(formerly Ten Thousand Villages)
Soup of Success

Hope for Nepal
Unity Gardens
Cheri's Crafts

Women's Fellowship Bake Sale
Malawi Matters
St. Margaret's House ...and more!

53105 Ironwood Road., South Bend, IN
(at the corner of Ironwood and Cleveland, across from Castle Point Apartments)

Christmas Pageant & Party with ND Students

The Notre Dame students of Cavanaugh Hall, a women's dormitory on campus, invite the community to Christmas Pageant on Sunday, December 7, from 5:00–7:00 p.m. They will share their rendition of Jesus' birth story starting at 5:00 p.m. in the Chapel. Afterward guests are invited for (free!) pizza and drinks and the opportunity to vote on the best decorated dorm hallway. Free parking is available around campus, with the St. Liam's parking lot being closest to Cavanaugh.

Please use [this form](#) or the QR code below to RSVP. Contact hall president, Emma Latchford, with any questions (elatchfo@nd.edu).



Missed an issue? Visit the [Tuesday Newsday Archive](#).

To submit an item for this e-newsletter, email tuesdaynewsday@gsms.org by Monday mornings at 8:00 a.m.



[Tuesday Newsday Archive](#)



Good Shepherd
MONTESSORI SCHOOL

Copyright (C) 2024 Good Shepherd Montessori School. All rights reserved.

[View this email in your browser](#).

Want to change how you receive these emails?

You can [update your preferences](#) or [unsubscribe](#)

