

In This Issue: Ice Skating Forms Due | This Friday: UE Museum Day | Primary Playdate Canceled | Vision Video | Advent Lessons & Carols | Library Wish List | Host Family Needed | Farm Corner | GSMS Christmas Tree | Hot Lunch



Welcome to Tuesday Newsday!

Volume 18, 2024–2025 | Edition: December 10–16



- 12/13:** Upper El Museum Day
 - 12/17:** Advent Lessons & Carols at Morning Prayer
 - 12/20:** Pajama and Ice Skating Day
 - 12/20:** Primary Only Early Dismissal – 11:30
 - 12/21–1/5:** No School – Christmas Break
-



Tuesday, December 10 — Patrick Garvey (Cedar)

Sunday, December 15 — Hartley Nichols (River Birch)

Tomorrow: Ice Skating Forms Due

December 20th is Pajama and Ice Skating Day!

On the last day before Christmas break, it's GSMS tradition for students to wear their pajamas to school and spend the morning participating in fun activities with their classmates.

Primary Early Dismissal

All Primary children (in Blue Beech and Redbud) must be picked up at 11:30 a.m. that day. There is no aftercare option.

INFO NEEDED: Ice Skating Forms

All Lower EI, Upper EI, and Junior High students will spend the afternoon ice skating at Howard Park. All families with LE, UE, or JH students must fill out the form below to participate in ice skating. **Please submit the form no later than Wednesday, December 11.**

- [GSMS Pajama Day Ice Skating](#)

Helmets

Note: Bicycle or hockey helmets are recommended for all skaters and **required** for Lower EI students. Please send your LE child's helmet (labeled) to school by **Wednesday, December 18**, or contact office@gsms.org about borrowing one.

Optional: Primary Family Ice Skating

Primary families have the option of joining us at Howard Park after their half-day pick-up. Any families interested in doing that must fill out this separate form. Primary children must be accompanied by their own adult at all times.

- [Primary Family Ice Skating](#)
-

This Friday: Upper El Museum Day

Friday, December 13 from 9–11:00 a.m.

Our Upper Elementary students are looking forward to welcoming you to Museum Day this Friday! At this open house-style event, the students will share displays of their work and talk about their favorite follow-ups. It is a can't-miss experience for UE parents and an excellent opportunity for parents from all levels to see the scope of work that happens in Upper Elementary. **Please drop in anytime between 9:00 and 11:00 a.m.** (Note: We are sorry that the ending time was misprinted in last week's *Tuesday Newsday*.)

Change to Primary Playdate

Tomorrow Canceled

The Primary family playdate scheduled for Wednesday morning, December 11 at the home of Angelica Anderson is canceled.

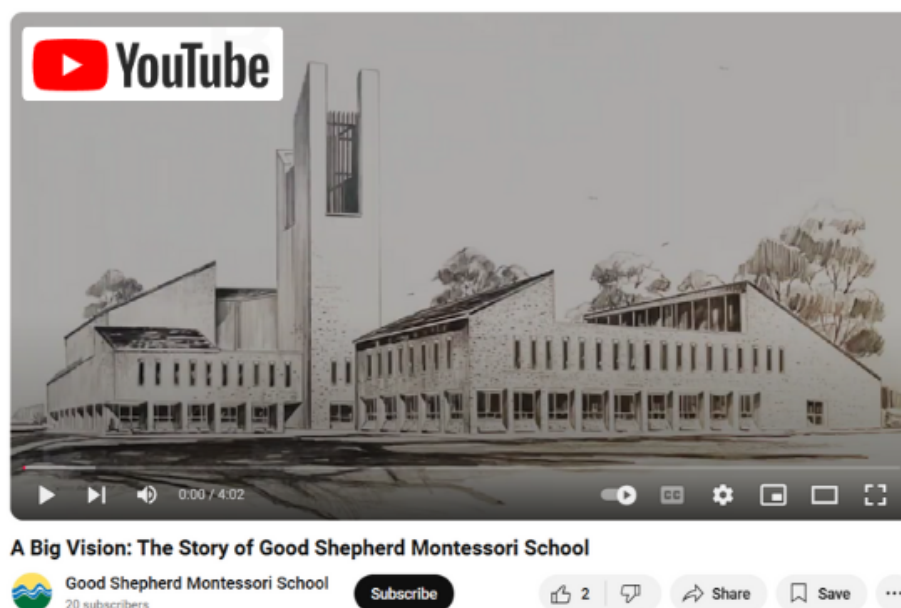


Thursday: Children's Museum of South Bend

This Thursday, December 12, the playdate will again be held at the Children's Museum of South Bend. Entry will be free for all GSMS Primary families who join after school around 3:30 p.m. Check out their [website](#) to see all there is to enjoy and explore!

GSMS Video and Three-Year Vision

Hopefully, all Good Shepherd families received an email from Dr. Kaiser last week with links to a new video and the “Three-Year Vision” document. The video is available on YouTube [here](#), and the two-page PDF can be accessed [here](#). These resources are designed to keep you and the broader GSMS community informed about where we stand as a school and where we are headed. If you haven’t already, we encourage you to watch the video and reflect on your role in shaping Good Shepherd’s story as we celebrate our mission and tackle challenges together.



Advent Lessons and Carols

On **December 17**, we will celebrate Advent Lessons and Carols at our regular **Tuesday Morning Prayer** service. Beginning at 8:30 a.m., this will be a wonderful time of prayer, reflection, and song for the GSMS community. Some Blue Beech and Redbud students and staff will also attend part of this special service. As is always the case with our Tuesday Morning Prayer services, we invite family members of GSMS students to join us and experience the time of prayer with the school community.



Give a Book via New Library Wish List

Our parent-volunteer GSMS librarians have put together a **new wish list** on Bookshop.org! When you purchase a book through the site, the wish list will automatically be updated, and a portion of the proceeds will support local, independent booksellers.



The wish list is maintained by our wonderful volunteers but is by no means comprehensive. They invite anyone to donate other titles you feel our students would benefit from. The librarians also welcome gently used books that are in good condition (no water-damaged books).

Thank you for helping foster our students' love of reading!

GSMS Library Wishlist

Seeking a Host Family for Miss Renée

We're looking for a new host family for Miss Renée beginning in January. Our current host family's mom took a new job in Michigan, and the MCC program requires host families to include both a host mom and a host dad.

If your family would like to welcome Renée into your home, please contact Katie Rutledge at krutledge@gsms.org.

Renée is a true gem, bringing positivity, kindness, humor, and creativity to her work with our Primary students. This fall, she's enjoyed traveling with her host family and cheering at Notre Dame sporting events. We'd love to find another Good Shepherd family to share everyday life and local adventures with Renée!



Farm Corner

Voluntary Lip Balm Recall

It seems a batch or two of our lip balm got an overdose of beeswax. If you purchased lip balm at the Junior High Holiday Sale and have found it to be a bit un-spreadable, please return it for a smoother batch. We are so sorry for the inconvenience but are committed to learning and growing in our micro economy business!

Cold on the Way

Make sure to finish those last-minute outside to-dos today; cold fronts are on the way!

Happy Holidays!

Farmer Theri

Visit the GSMS Christmas Tree

The next time you are out and about in the East Bank Village, visit the Good Shepherd Christmas tree at the northeast corner of St. Louis and Jefferson in front of Barnaby's. The tree features some handmade ornaments thanks to our crafty students and Ms. Laurie Rousseau.

If you are a Facebook user, watch this [page](#) for Downtown South Bend to make a post about the holiday tree program and follow instructions to vote for Good Shepherd's

tree.

If you snap a picture of your family with the tree, send it to krutledge@gsms.org. We will share it on the [GSMS Facebook page](#) or in the next *Tuesday Newsday* with your permission.



Hot Lunch

Menu

- Wed 12/11 – ABC Soup & NNPBABS
- Thurs 12/12 – Poutine
- Fri 12/13 – Salad Bar
- Mon 12/16 – Pizza Pie
- Tues 12/17 – Crème Brûlée
French Toast



Order Today!

Missed an issue? Visit the [Tuesday Newsday Archive](#).

To submit an item for this e-newsletter, email tuesdaynewsday@gsms.org by Monday mornings at 8:00 a.m.



[Tuesday Newsday Archive](#)



Good Shepherd
MONTESSORI SCHOOL

Copyright (C) 2024 Good Shepherd Montessori School. All rights reserved.

[View this email in your browser.](#)

Want to change how you receive these emails?

You can [update your preferences](#) or [unsubscribe](#)